

FREEHOLD



House - Mid Terrace (EPC Rating:)

894 NORTH CIRCULAR ROAD, NEASDEN,
LONDON, NW2 7TE

Asking Price

£465,000



HAYMILLS
Expertise Experience Engagement



3



1



2



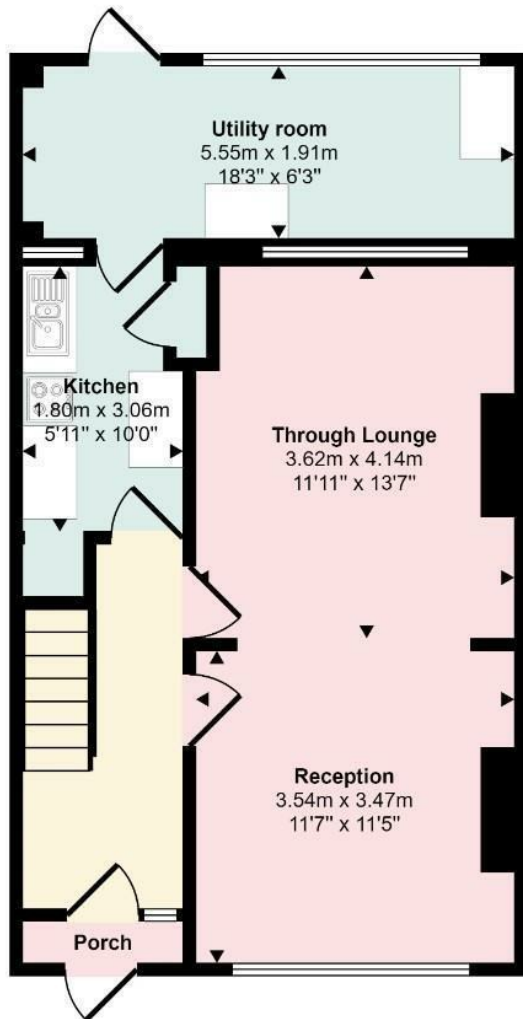
3 Bedroom House - Mid Terrace located in London

Charming 3-Bedroom Family Home with Generous Living Space & Garden

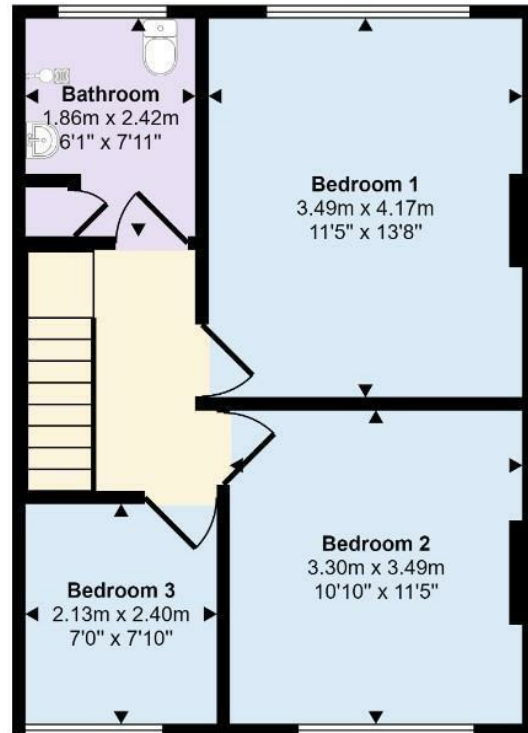
Discover this inviting and spacious family home offering two bright reception rooms, a modern fitted kitchen, and a versatile lean-to at the rear – perfect as a playroom, dining space, or home office. Upstairs, you'll find three well-proportioned bedrooms and a contemporary family bathroom. Enjoy the comfort of gas central heating, double-glazed windows, and a large private rear garden. Situated on the A406 (North Circular Road), this home offers excellent transport links, with Brent Cross Shopping Centre and the M1 just minutes away. An excellent value home in a prime location – early viewing is highly recommended!



Approx Gross Internal Area
99 sq m / 1061 sq ft



Ground Floor
Approx 55 sq m / 595 sq ft



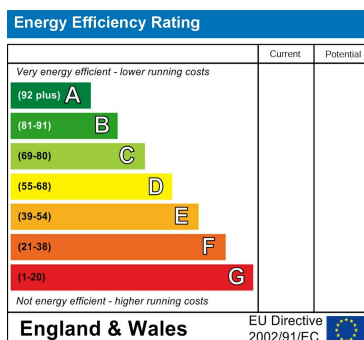
First Floor
Approx 43 sq m / 466 sq ft

This floorplan is only for illustrative purposes and is not to scale. Measurements of rooms, doors, windows, and any items are approximate and no responsibility is taken for any error, omission or mis-statement. Icons of items such as bathroom suites are representations only and may not look like the real items. Made with Made Snappy 360.

Council Tax Band

D

Energy Performance Graph



Call us on

0208 904 8822

info@haymills.uk

Agents Note: Whilst every care has been taken to prepare these particulars, they are for guidance purposes only. All measurements are approximate and are for general guidance purposes only and whilst every care has been taken to ensure their accuracy, they should not be relied upon and potential buyers are advised to recheck the measurements.



HAYMILLS
Expertise Experience Engagement